

Age profile of the APS



Sue Johnson
Review and Evaluation Group

APS Employment Database



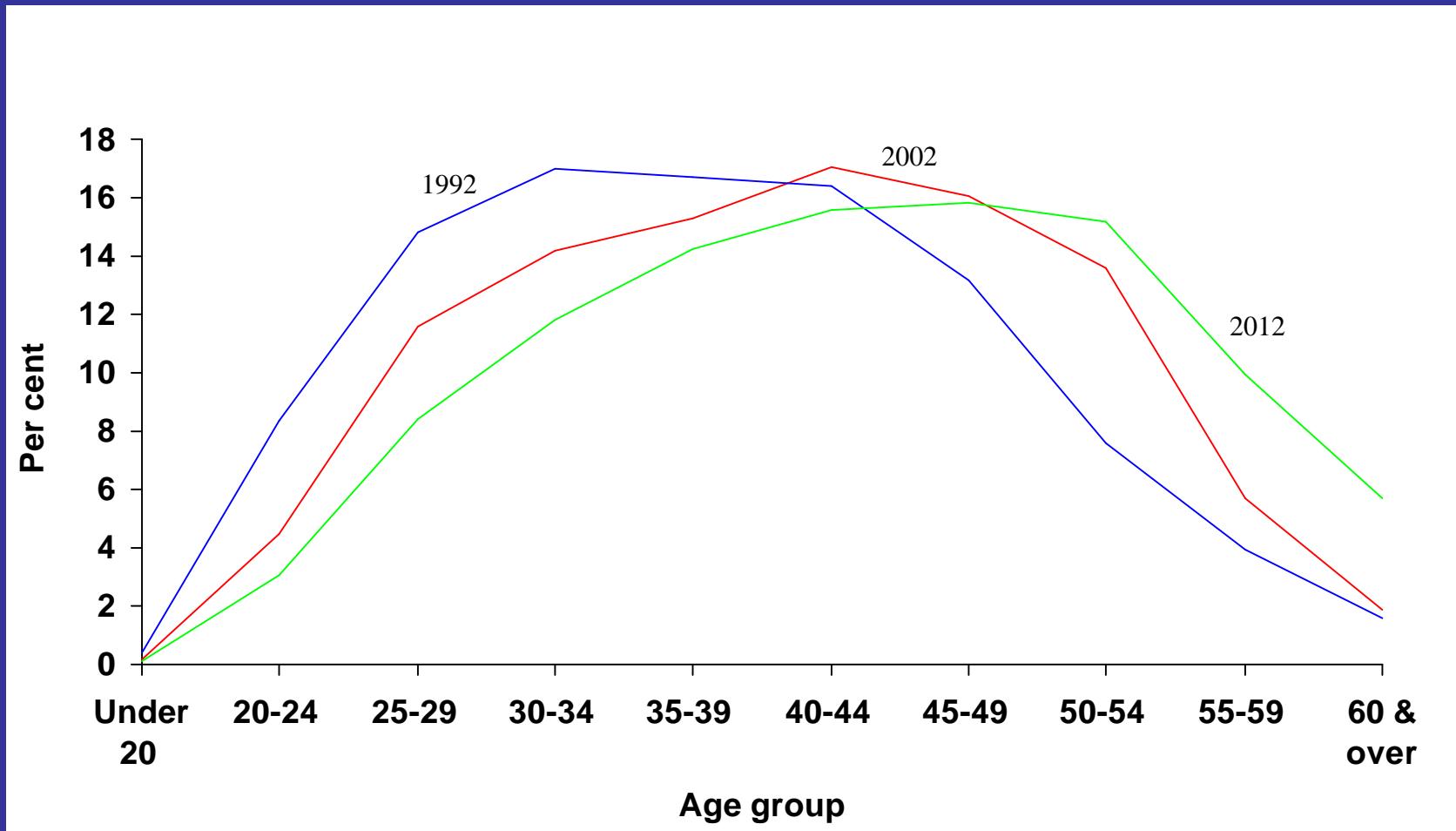
- data on ongoing and non-ongoing employees
- data back to 1960s
- classification and agency
- movements
- demographic data
- diversity data
- point in time and time series analysis

Median age

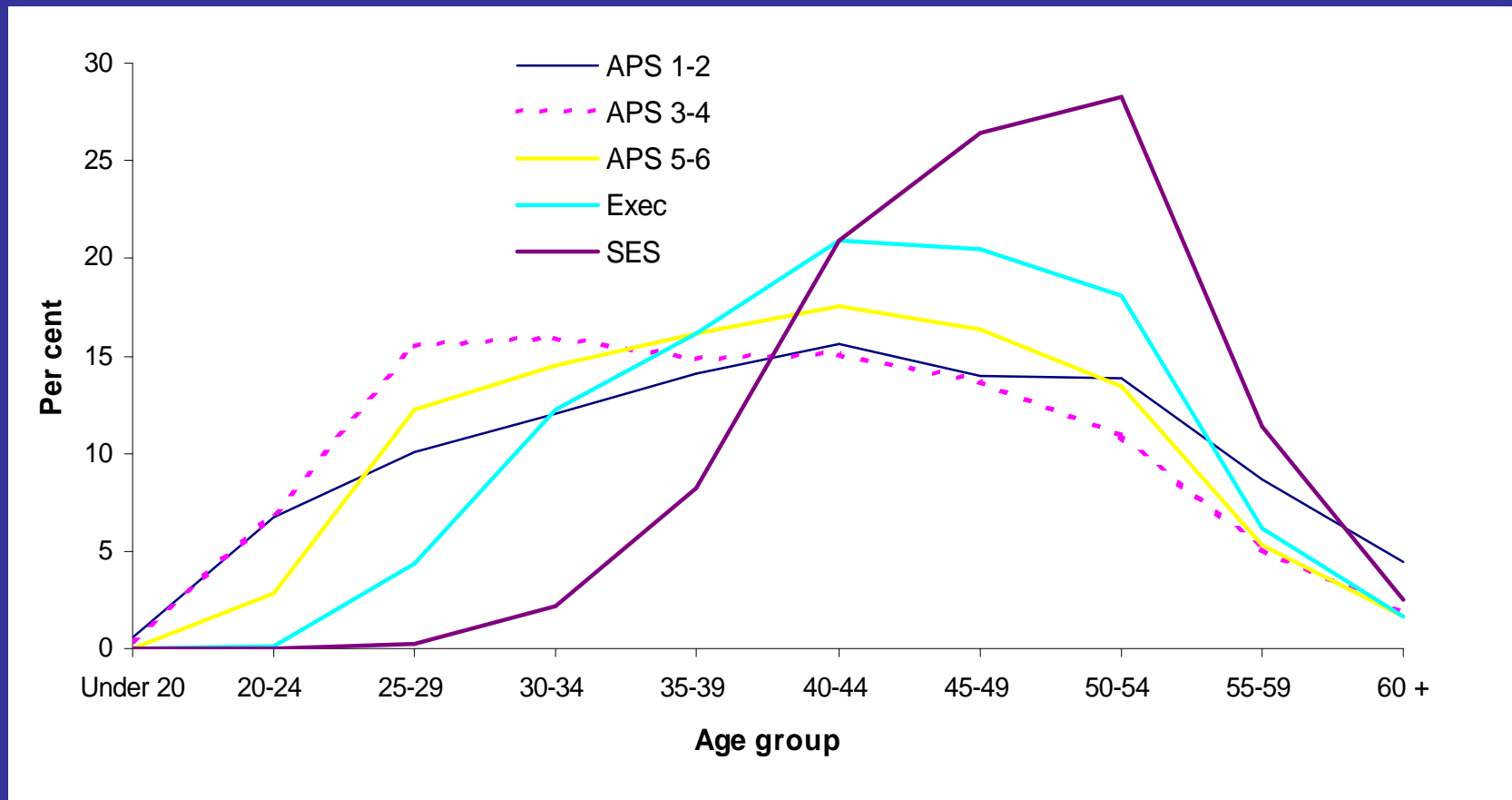


	1992	2002
Males	39	43
Females	34	39
Total	37	41

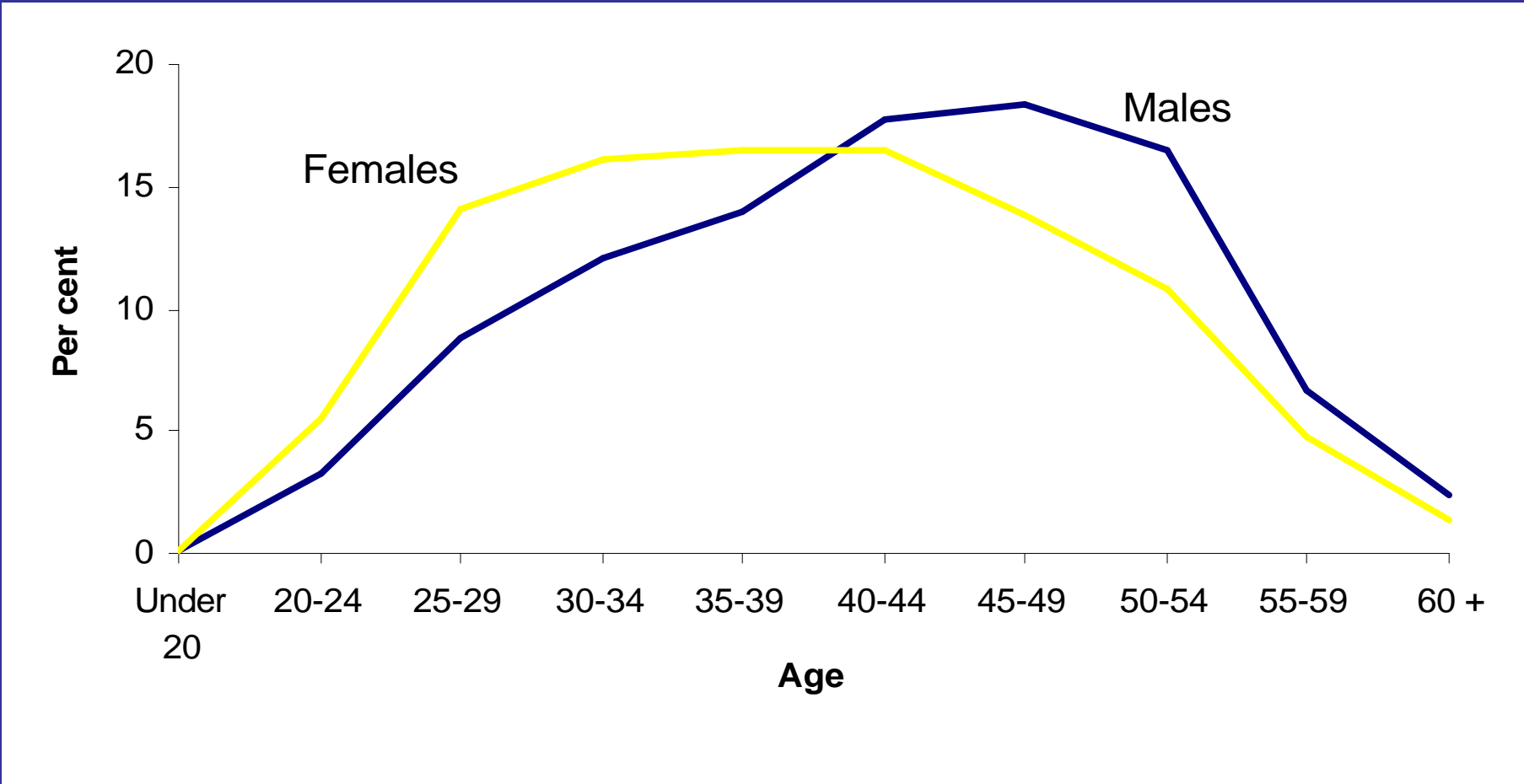
Age distribution 1992, 2002, 2012



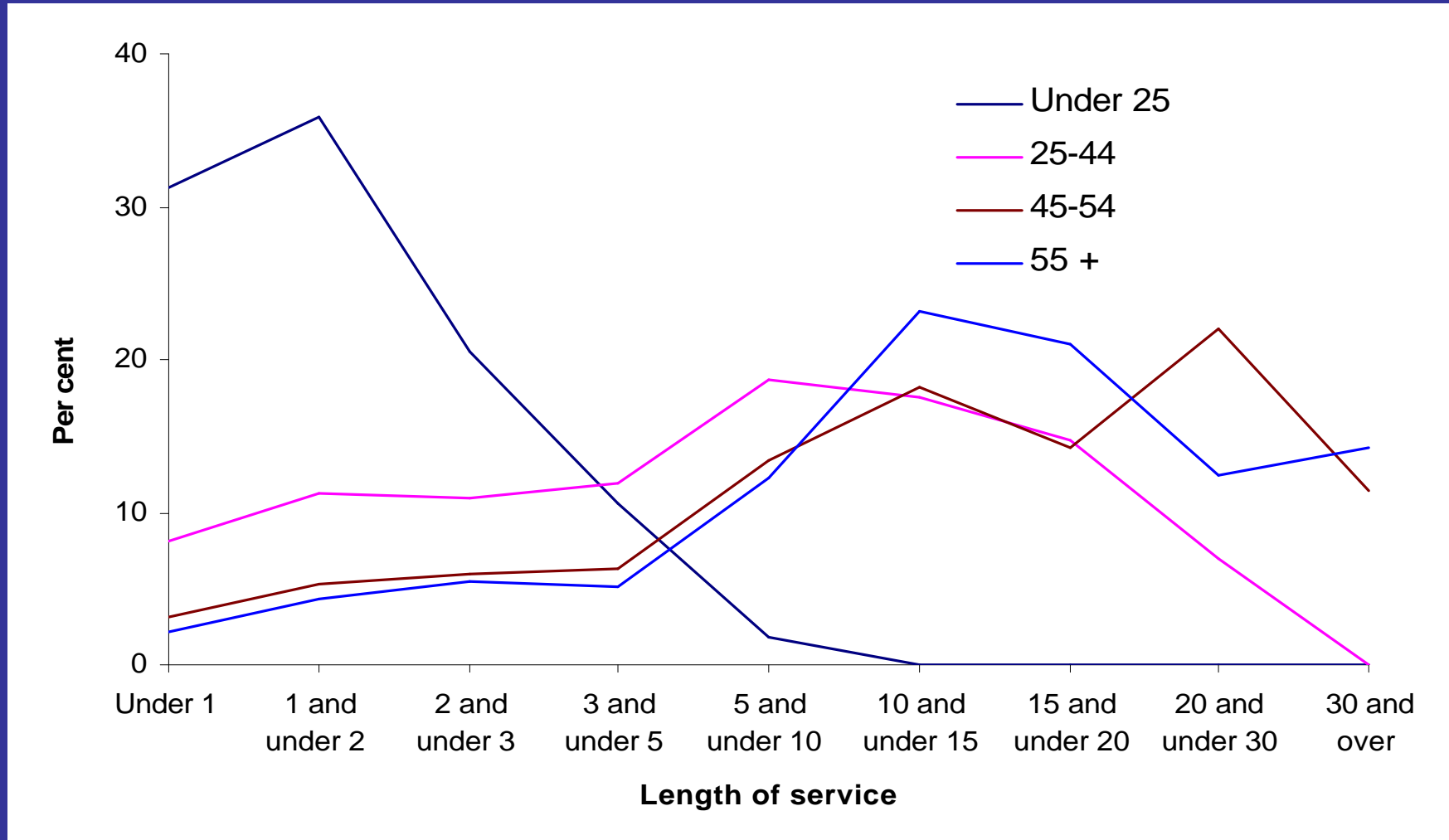
Classification by age group



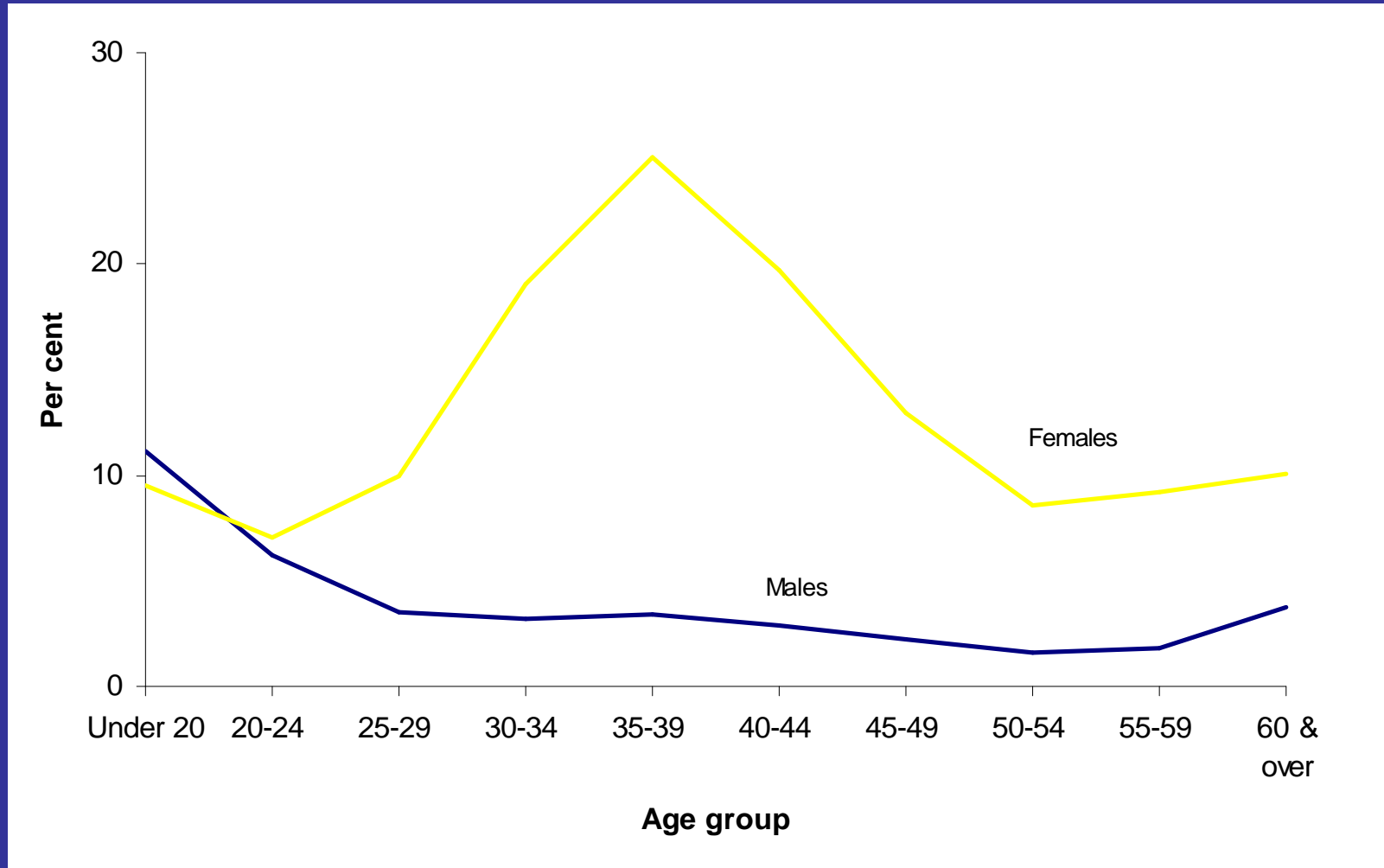
Gender by age group



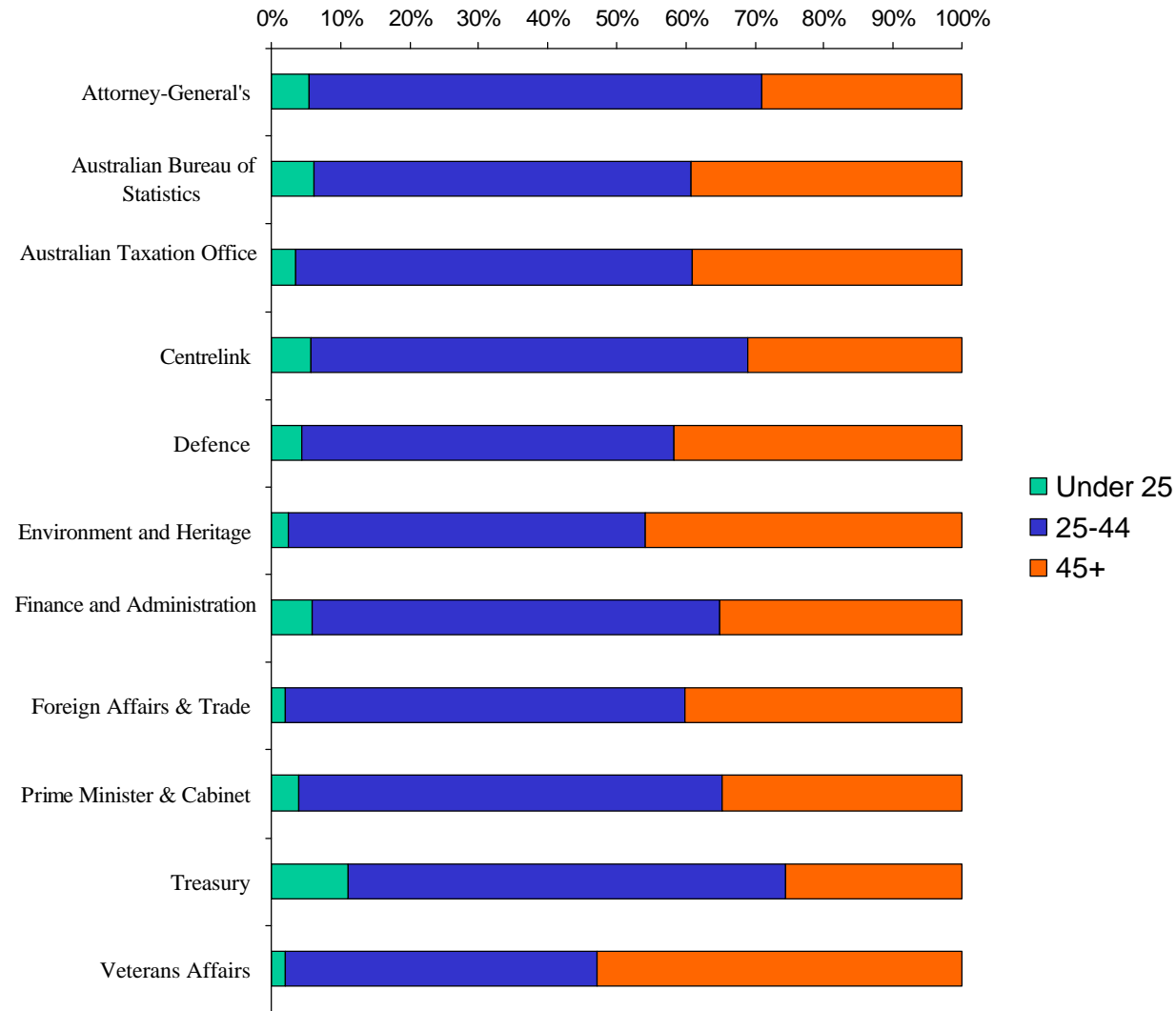
Length of service by age group



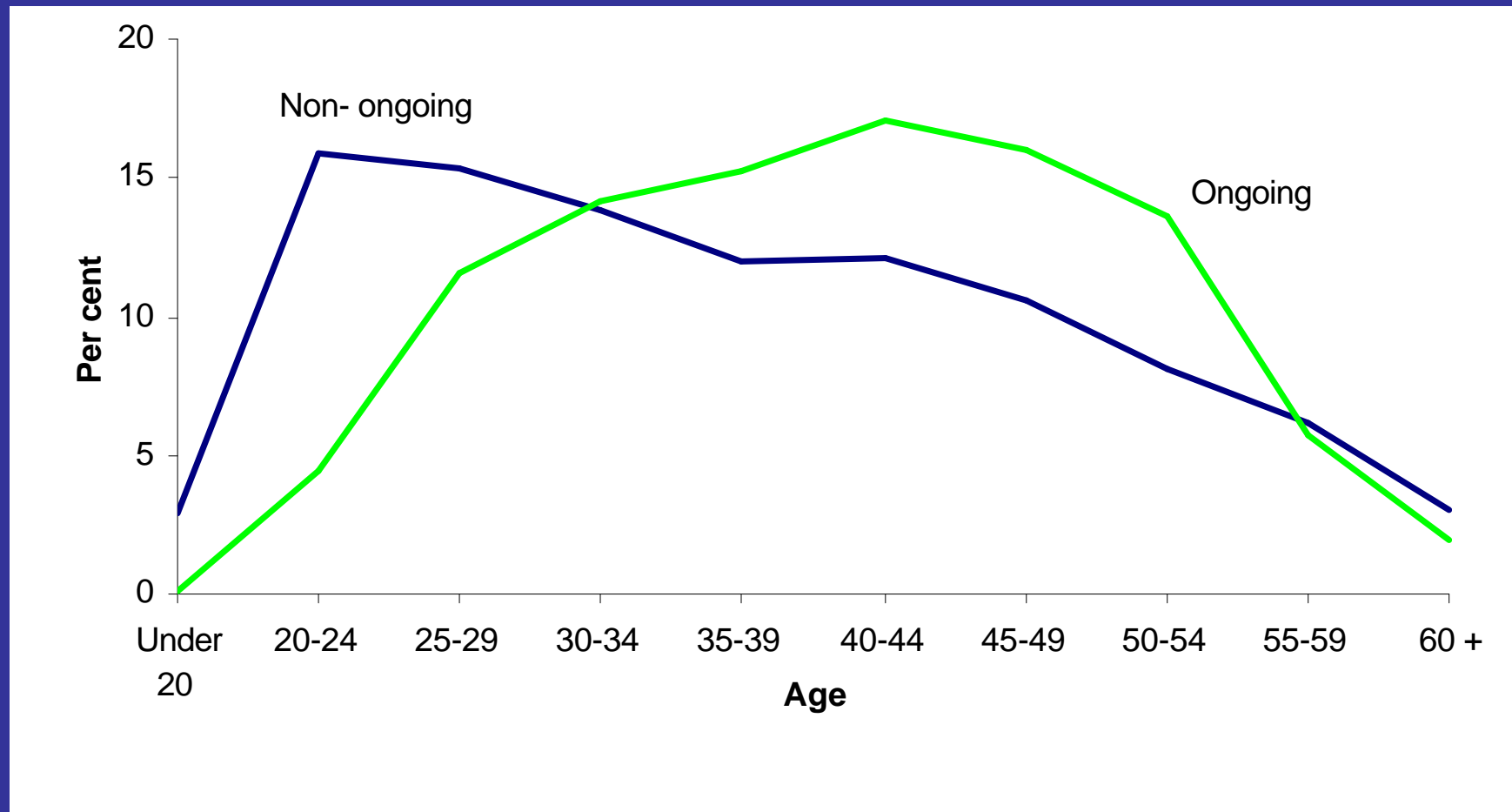
Part time work by age group



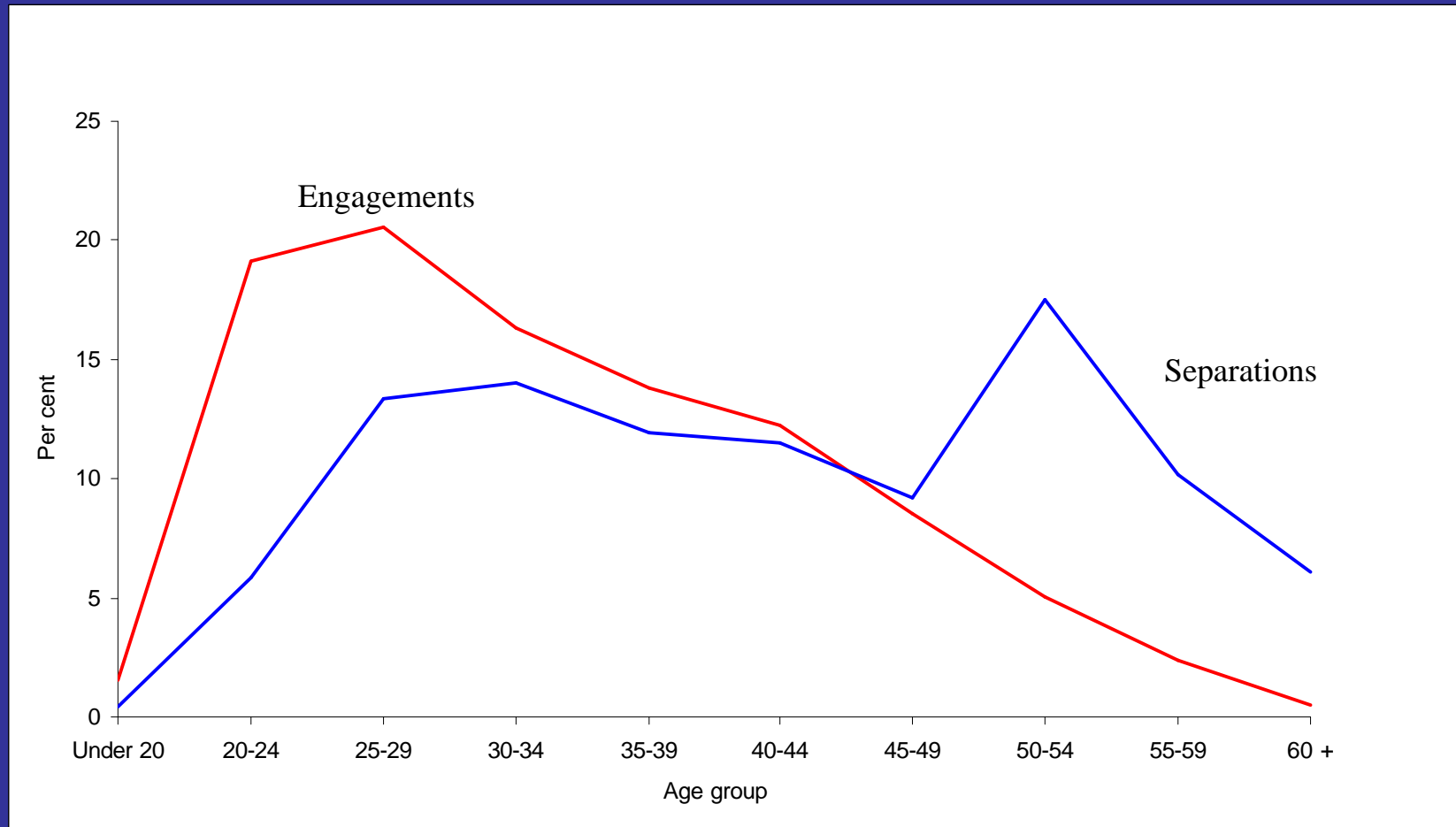
Age profile in selected agencies



Employment category



Engagements and separations



What next?



- recent trends
- current patterns
- future possibilities
- important to look at data in context of agency
 - skills base
 - succession planning
- look within agency
 - differences within structure

APSED – how we can help



- analysing agency specific data
- providing benchmark data for APS, or group of like agencies
- matching APSED data with agency structure (drill down analysis)

sue.johnson@apsc.gov.au

(02) 6272 5505